

# PC Internet Sharing Guide

Rev1.0

09/27/2023










# Contents

- 1. Why PC Internet Sharing ..... 1
- 2. Get Ready! ..... 1
- 3. Set Up PC Internet Sharing ..... 4
  - 3.1 Windows 10 ..... 4
  - 3.2 Windows 11 ..... 8
- 4. Disable PC Internet Sharing.....12
  - 4.1 Windows ..... 12

# 1. Why PC Internet Sharing

While a router provides and shares internet access to connected devices when plugged in and configured via an Ethernet cable, Puppis S1 can establish an internet connection both wired and wirelessly.

Below is a chart outlining the supported internet setups under different modes:

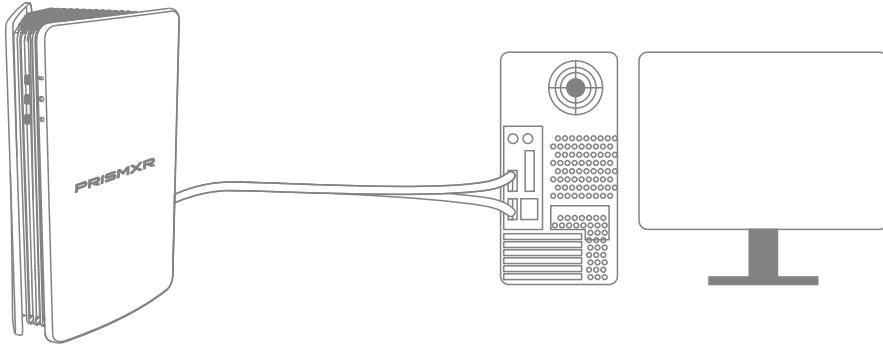
Model	2.4G Wi-Fi	5G Wi-Fi	PC Internet Sharing
PrismPulse			
Wi-Fi Hotspot			
Wi-Fi Adapter			

Here,

- 2.4G WiFi or 5G WiFi' implies that Puppis S1 could connect to the internet in a WiFi environment, as easily as a cellphone.
- PC Internet Sharing' implies that Puppis S1 could connect to the internet via a wired-connected PC, which shares its Ethernet or WiFi connection.
- PC Internet Sharing' is what we explained in the following instruction.

## 2. Get Ready!

- A PC or Laptop
  - is required to have two USB ports, with at least one being USB 3.0.
  - run windows 10 or 11.
- Connect Puppis S1 to the PC with the provided cable.



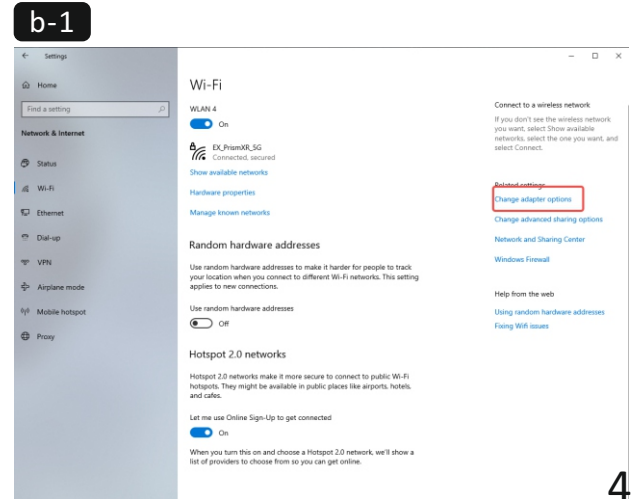
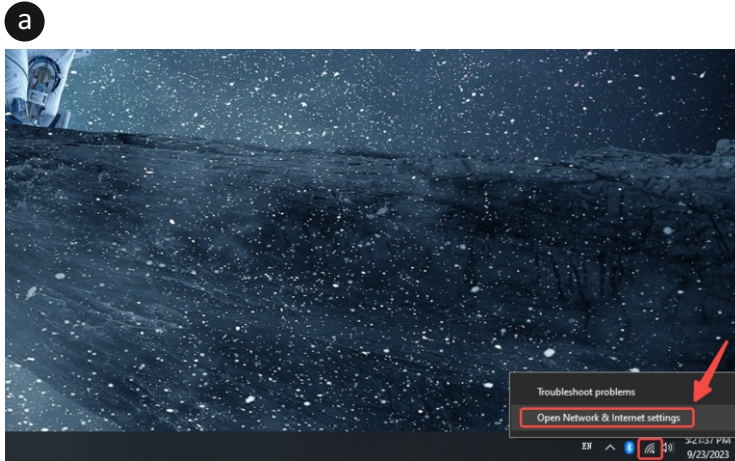
❗ Please note, a PC or Laptop with only USB-C is also compatible. In this case, a USB-C to USB-C cable supporting data transfer is required. The cable needs to be purchased separately.

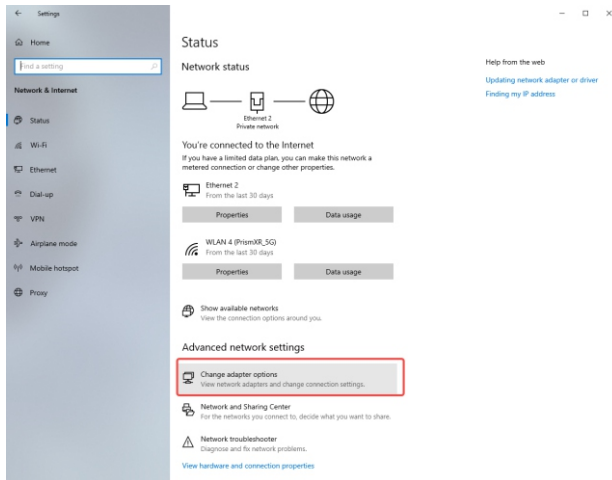
# 3. Set Up PC Internet Sharing

## 3.1 Windows 10

- 1 Right-click the network icon (Ethernet or WiFi) and select "Open Network & Internet Settings," then click "Change Adapter Options" to access "Network Connections" settings.

\*Alternatively, navigate to the next step via "Windows Settings" > "Network & Internet" > "Change Adapter Options".

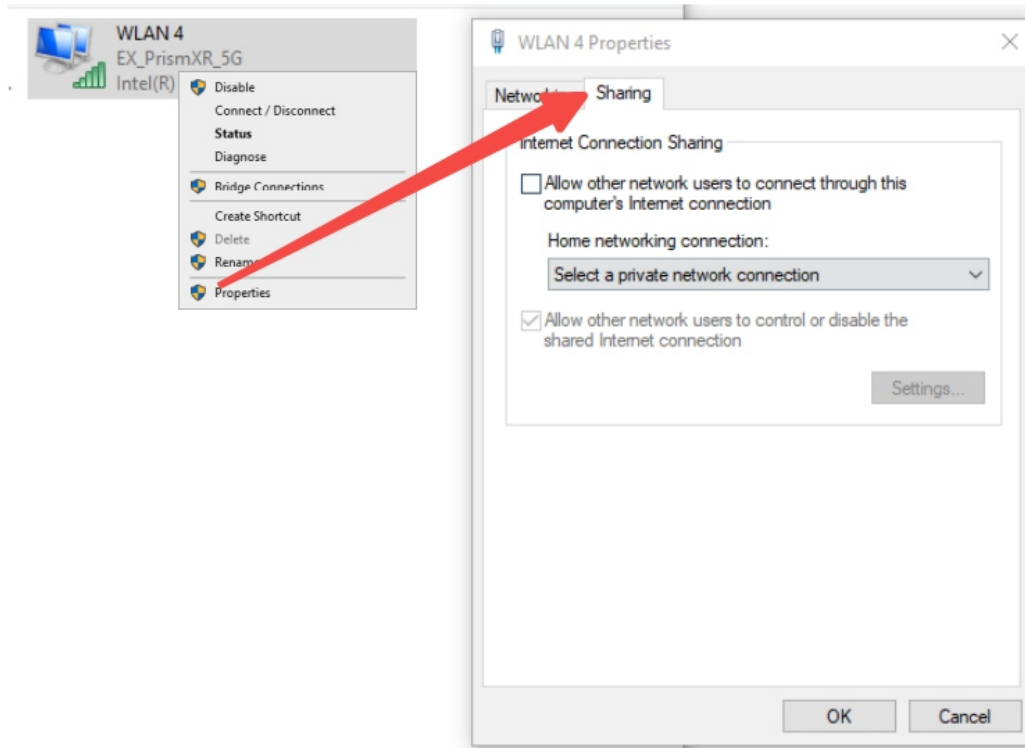




- ② Identify the internet connection you wish to share with Puppis S1.
- \*The Ethernet labeled "ASIX AX88179 USB3.0..." denotes the connected Puppis S1.



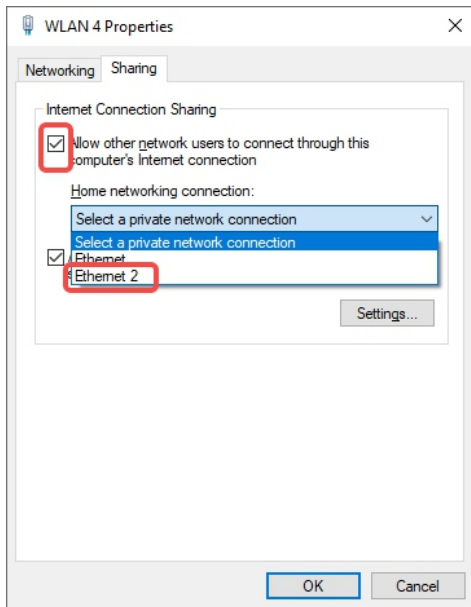
- ③ Right-click the desired network for sharing with Puppis S1, select "Properties", and navigate to the "Sharing" tab within the Properties window.





- ④ Check the first box ("Allow other network users to connect...") and then select the connection from Puppis S1, as identified in step 2.

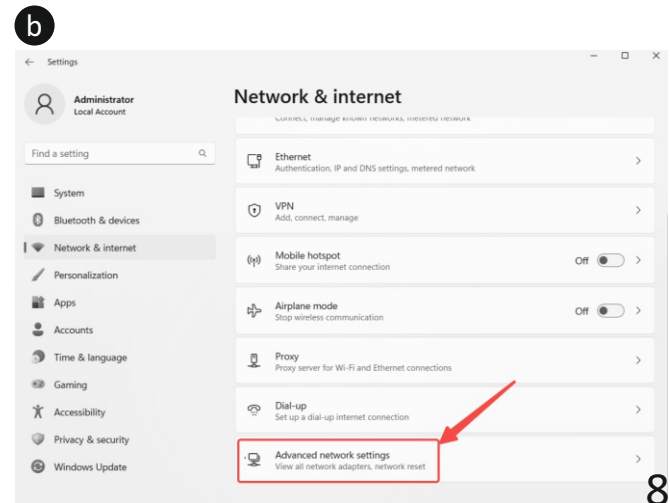
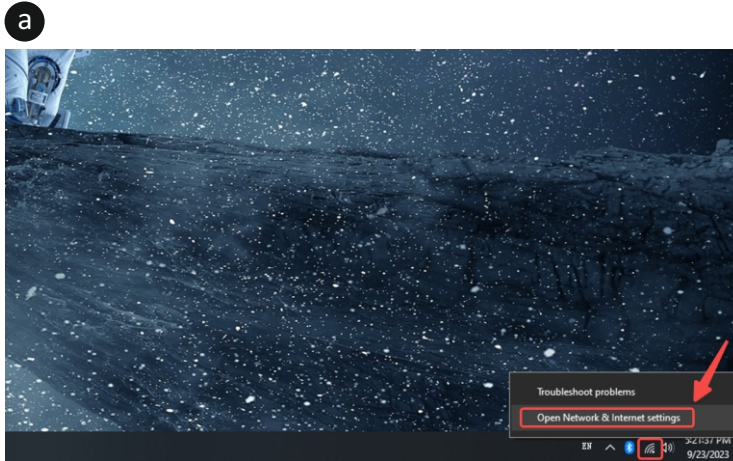
\*In some systems, options under "Home Networking Connection" may be absent. If this occurs, there's no need to select one for Puppis S1; the internet will be shared automatically.

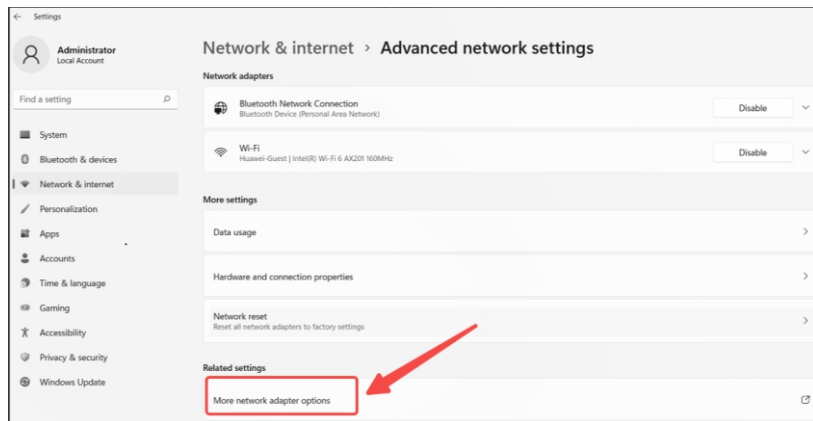


## 3.2 Windows 11

- 1 Right-click the network icon (Ethernet or WiFi) and select "Open Network & Internet Settings". Click "Advanced network settings", then click "More network adapter options" to access "Network Connections" settings.

\*Alternatively, navigate to the next step via "Windows Settings" > "Network & Internet" > "Advanced network settings" > "More network adapter options".



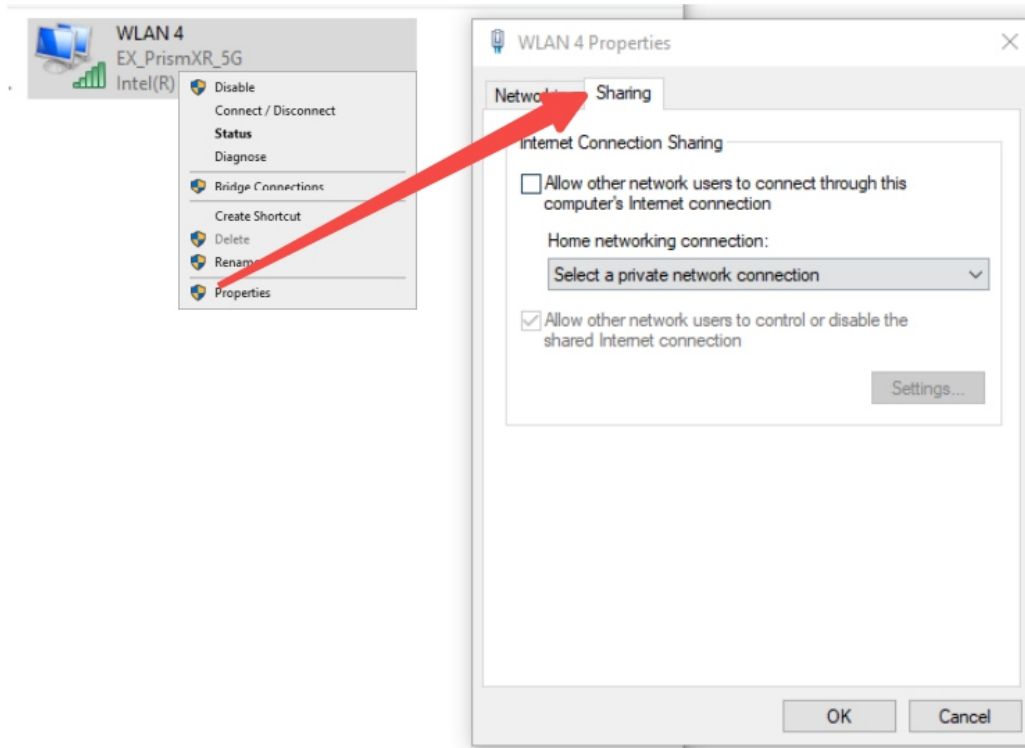


② Identify the internet connection you wish to share with Puppis S1.

\*The Ethernet labeled "ASIX AX88179 USB3.0..." denotes the connected Puppis S1.

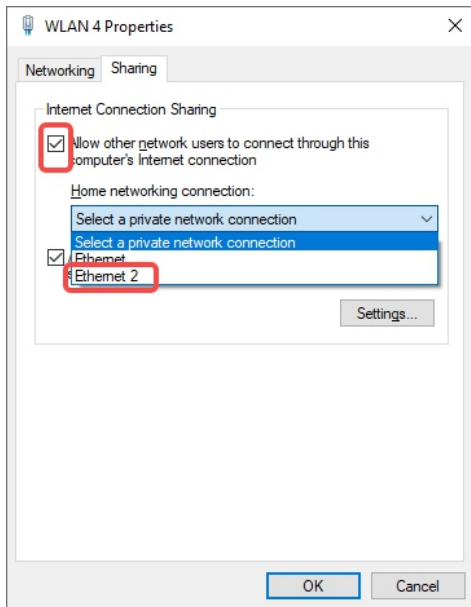


- ③ Right-click the desired network for sharing with Puppis S1, select "Properties", and navigate to the "Sharing" tab within the Properties window.



- ④ Check the first box ("Allow other network users to connect...") and then select the connection from Puppis S1, as identified in step 2.

\*In some systems, options under "Home Networking Connection" may be absent. If this occurs, there's no need to select one for Puppis S1; the internet will be shared automatically.



## 4. Disable PC Internet Sharing

### 4.1 Windows

- ➊ Repeat the step from the previous section (Section 3) and navigate to the Properties of the Network for which you want to disable sharing.
- ➋ Uncheck the first box ("Allow other network users to connect...").
- ➌ Click "OK," and it's all set.